

AFA9500 | Aurora Mobile Phone Forensic Analysis System

Intelligently control data, gain insight into the truth, and fully cover the needs of law enforcement agencies for evidence collection and analysis.

BRIEF INTRODUCTION



New Generation Forensic
Tower Deployed with Aurora



New Generation Forensic
Workstation Deployed with Aurora

AFA9500 Aurora Mobile Phone Forensic Analysis System is an intelligent, efficient and practical mobile phone data forensic analysis tool. The product integrates deep recovery, cloud extraction and smart diagnosis. Aurora has many wonderful features such as fast and comprehensive data collection, accurate and wide support for data recovery. Aurora helps law enforcement personnel quickly lock in key clues, provides all-round data support for investigation and handling, and greatly improves the efficiency of case investigation and handling.

CORE VALUE



Deep Data
Recovery



Smart Diagnosis
and Extraction



Cloud-Based
Silent Extraction

APPLICATION SCENARIO

① Law Enforcement Agencies

- **Investigation:** Quickly extract the data of mobile phones involved in the case and provide key clues for solving the case.
- **Trial:** Provide comprehensive and accurate data evidence to help judges make fair decisions.
- **Prosecution:** Deeply mining hidden data and enhance prosecution efforts.
- **Supervision:** Key technical support in the fight against corruption, ensuring that corruption is uncovered.

② Enterprise Compliance and Risk Control

- **Internal investigation:** compliance inspection and prevention of internal risks.
- **Commercial litigation:** quickly obtain fixed electronic evidence and protect the legitimate rights and interests of enterprises.

HIGH LIGHTS

Strong recovery ability

Deeply mining the underlying data of mobile phones, it can recover deleted information including WeChat, QQ, Telegram and other applications to ensure the comprehensiveness and integrity of case evidence. Whether it is withdrawn messages or deleted pictures, all types of data can be captured, leaving hidden data untraceable, providing strong data support for case investigations.

Silent Cloud Extraction

Supports data acquisition from multiple cloud applications, broadens data sources, and provides silent extraction mode for some applications, significantly improving the secrecy of investigation work.

Smart Diagnosis and Extraction

It can quickly screen clues within seconds and accurately identify the status of privacy protection functions and sensitive applications in mobile phones, helping investigators and evidence collectors to quickly determine the focus of investigation and significantly improve the efficiency in scenarios with massive amounts of evidence. At the same time, we should connect with diversified evidence collection strategies and take as many clues as possible to broaden the sources of clues.

In-depth Support for the APP Data Extraction

Immediately respond to the data extraction needs of worldwide popular APPs involved in the case, and ensure the accuracy and completeness of data acquisition during the case handling process through high-frequency APP support updates and APP data deep mining and recovery technology, providing solid technical support for case detection.

ADVANCED TECHNOLOGIES

Professional Recovery Technology

Industry-leading data recovery technology, fully recovering deleted information, meeting the professional needs of judicial, corporate and other fields.

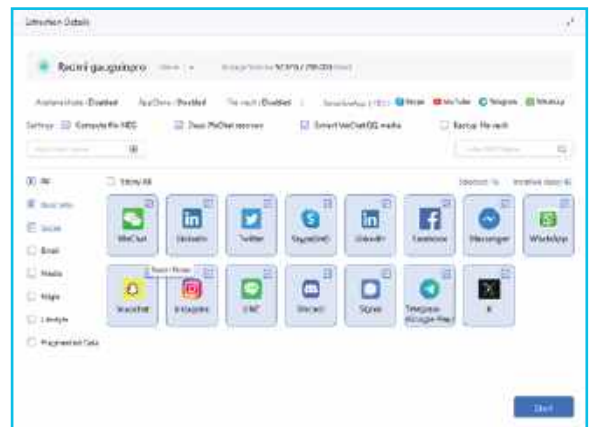
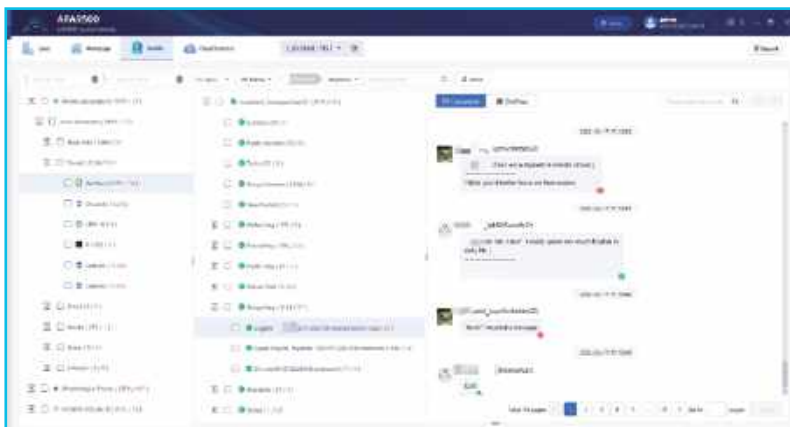
Intelligent Pre-screening and Precise Focus

Accurately identify the privacy protection status of mobile phones and application installation status, and screen and detect key points in as fast as 30 seconds.

Comprehensive Coverage and Flexible Evidence Collection

Rich and diverse evidence collection strategies, widely supporting mainstream applications and mobile phone models at home and abroad.

USER INTERFACE SHOWCASING



XLY Salvationdata Technology INC.

R&D AND MARKETING CENTER: Room 1706, E5 Area, Global Center, Wuhou District, Chengdu City, Sichuan Province, China

✉ shirley@salvationdata.com

🌐 www.salvationdata.com

Follow us:

