

DRS Disk Imaging Function Demo

Valid / Invalid Data Imaging

1. Overview

While performing imaging, there are times that only the data in valid region or invalid region is required. And this can be realized through Advanced imaging.

2. Operation



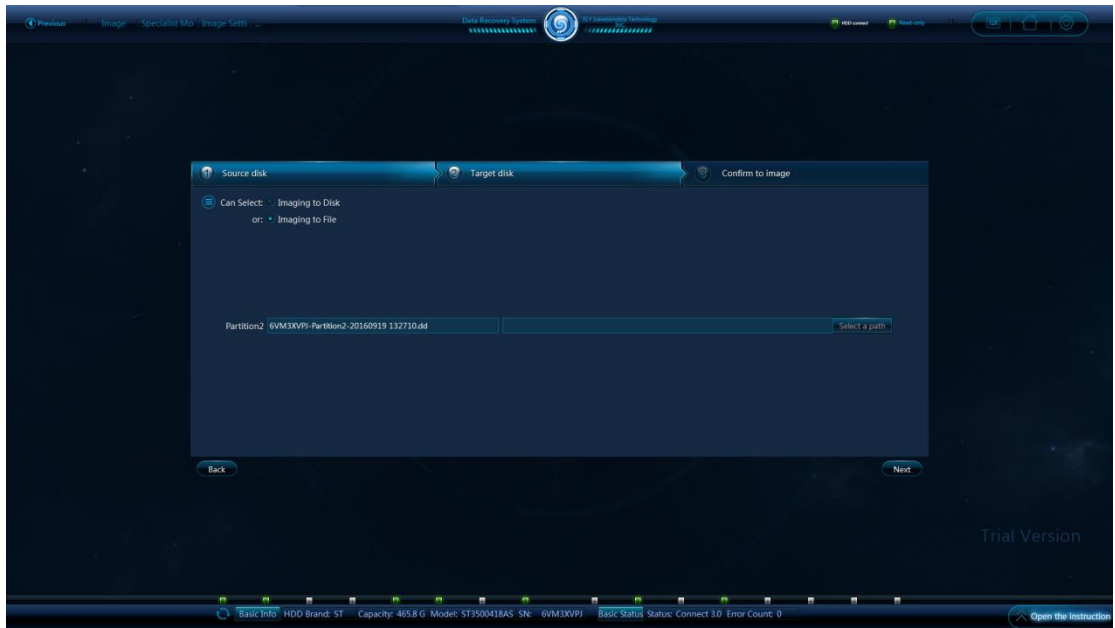
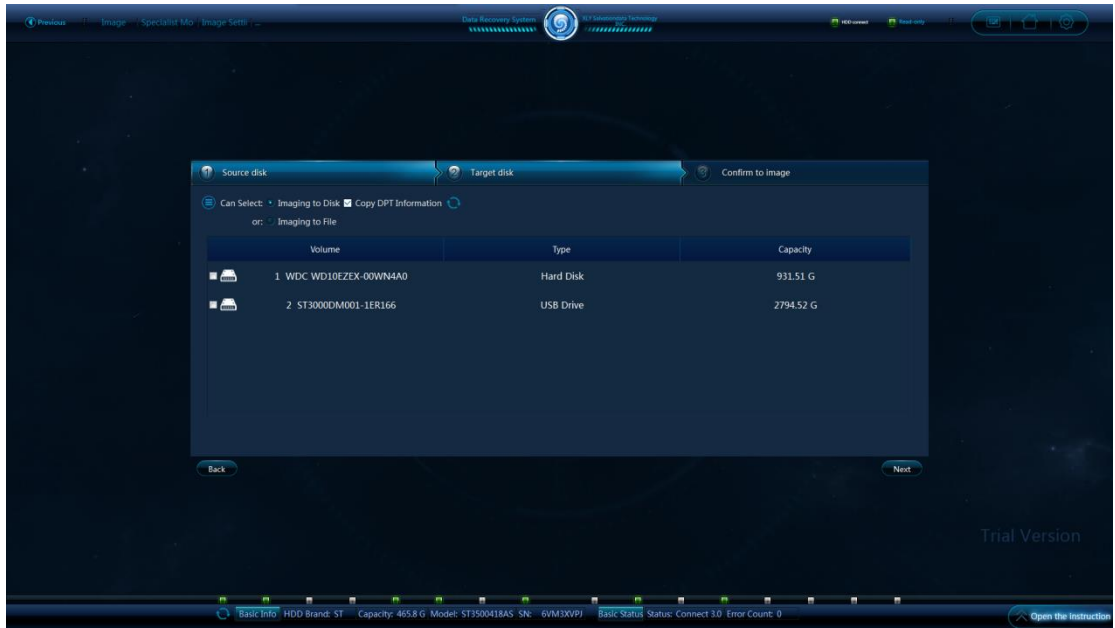
Here we select Partition-2 as the Source disk. Please note that while selecting imaging partition in Advanced imaging, there are two options, i.e. Valid Content and Invalid Content. Hence the valid or invalid data imaging can be implemented according to your own needs.



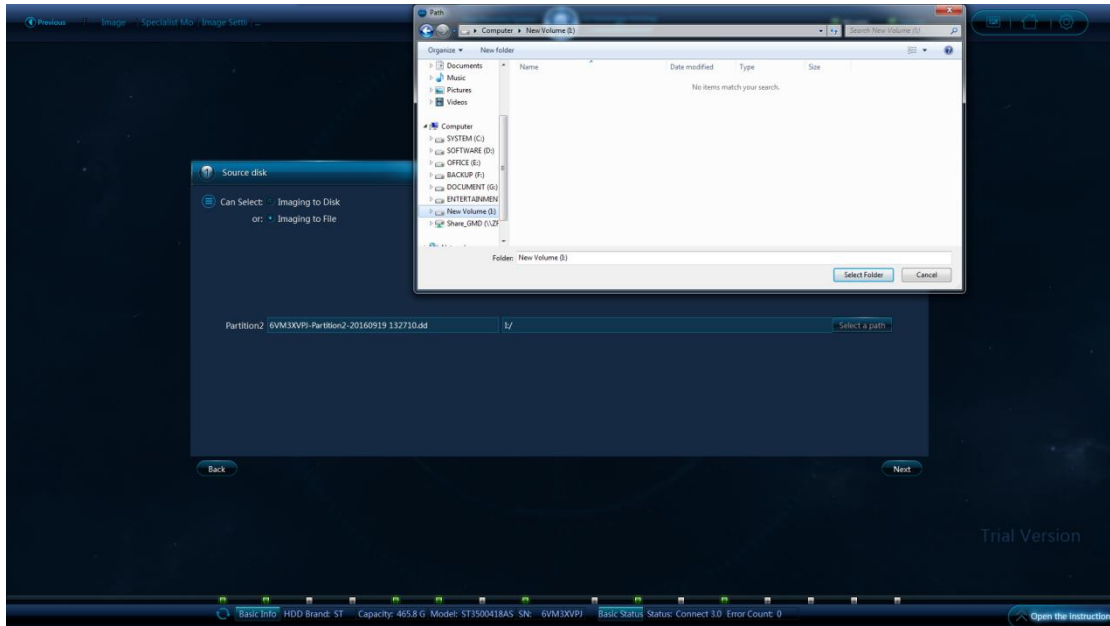
Now we image the valid data first.



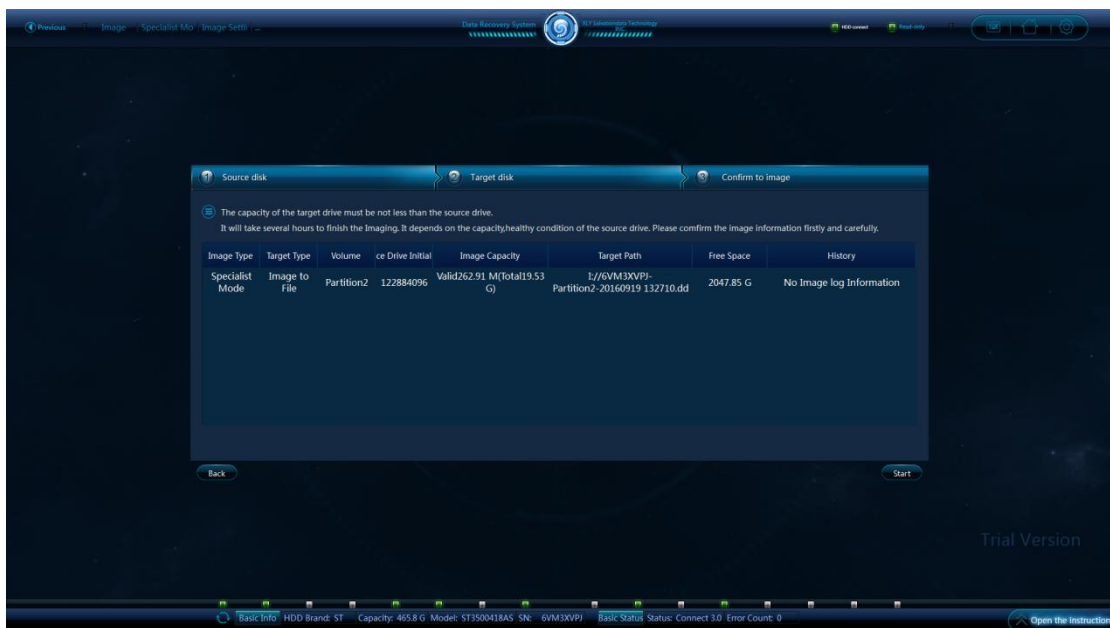
Just like the Quick imaging, Imaging to Disk or Imaging to File can be selected in Advanced imaging as well.



Here we select Imaging to File.



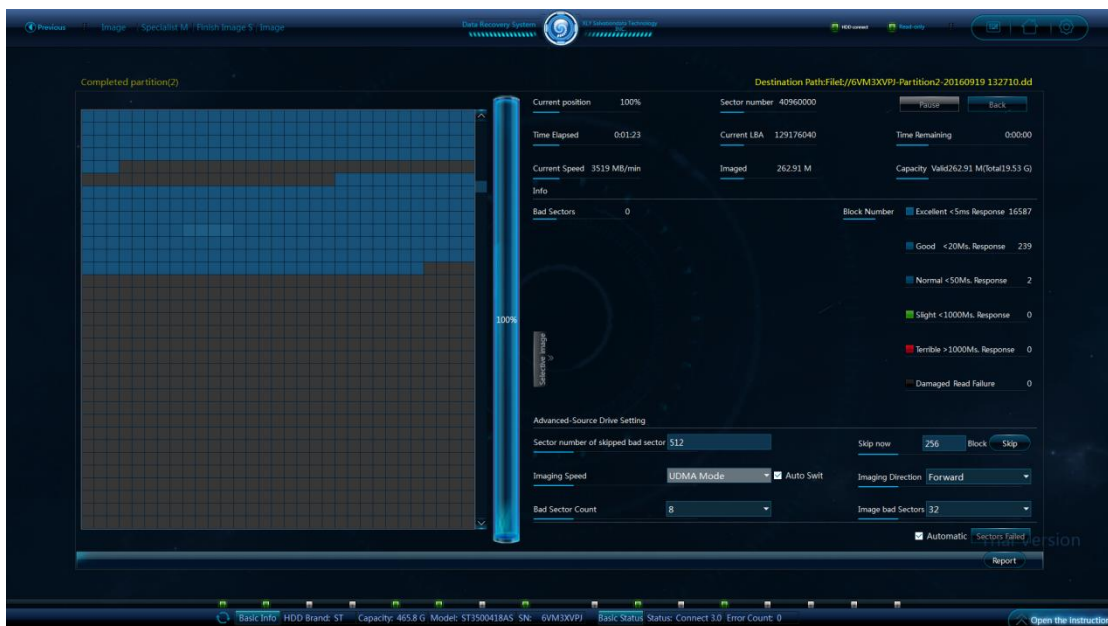
After reviewing the settings, click Start to image.



There are some additional parameter settings in Advanced imaging, please be aware that you need to click Start manually to start imaging.



Now image is completed. It is obvious that DRS only image about 260M data (see the blue part) after selecting valid data imaging.

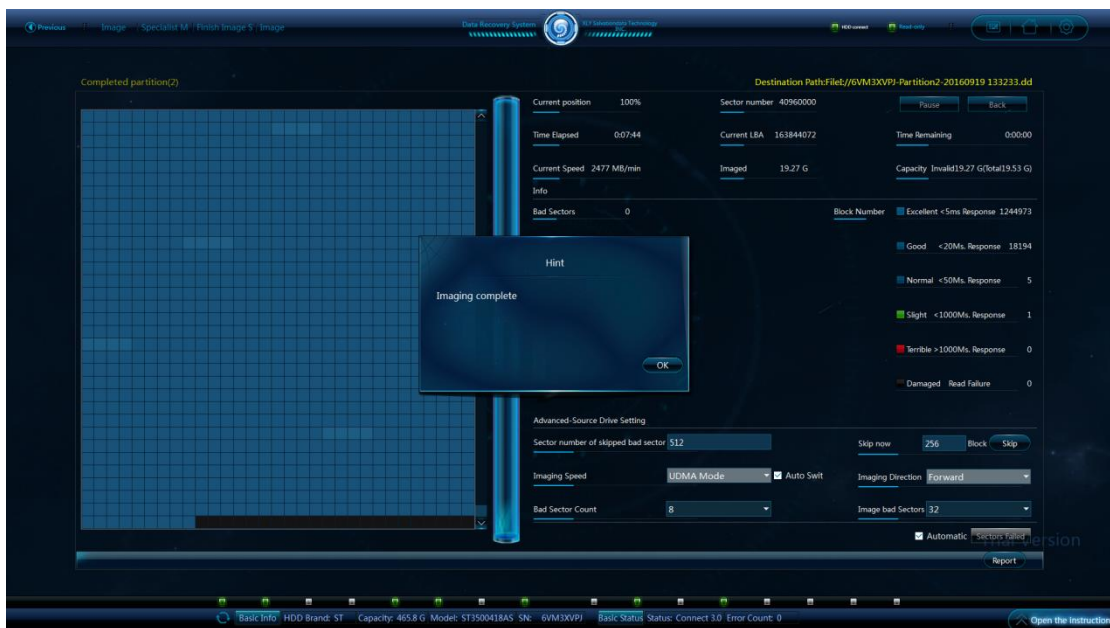


This completes image for valid data.

Next we start to image the data in invalid region. Except for selecting the Invalid Data, the process is the same as the valid data imaging.



As shown, DRS images all the data out of the valid region in Partition-2.



This completes the image for invalid data.