

DRS Disk Imaging Function Demo

Normal Hard Drive Imaging

1. Overview

As normal hard drives without bad sectors doesn't involve skipping bad sectors while imaging, we can choose the relatively fast and simple approach, i.e. Quick Image function. And the specific operation of this function is demonstrated as below.



2. Operation

Step 1 Select the Source disk.

We can either select Full Image or simply click certain partitions for partial image.



Full Image



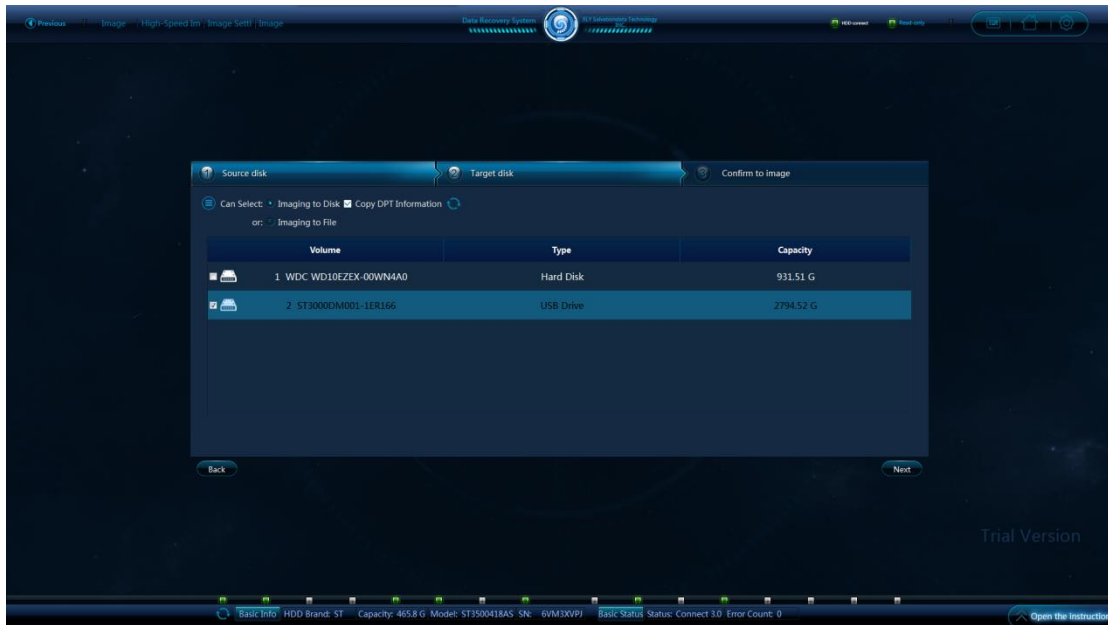
Imaging by Partition

Step 2 Select the Target disk.

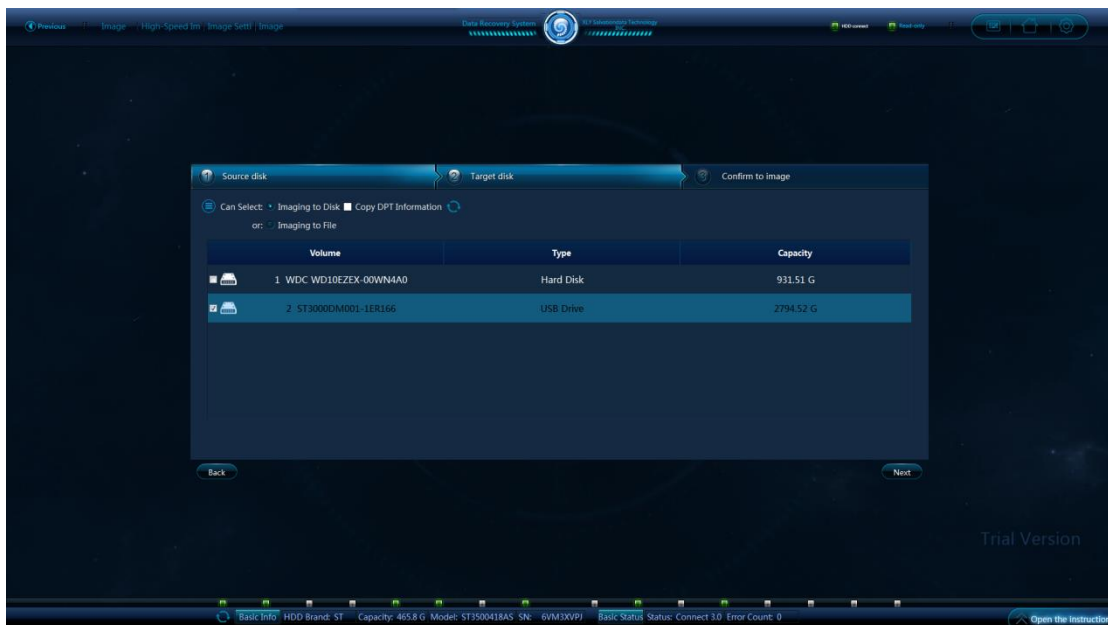
We can either select Imaging to Disk or bit by bit image(Data consistency is

thus ensured by imaging data stored on every sector of the source disk to the identical sector of target disk).Or we can select Imaging to File to save the data in the directory specified.

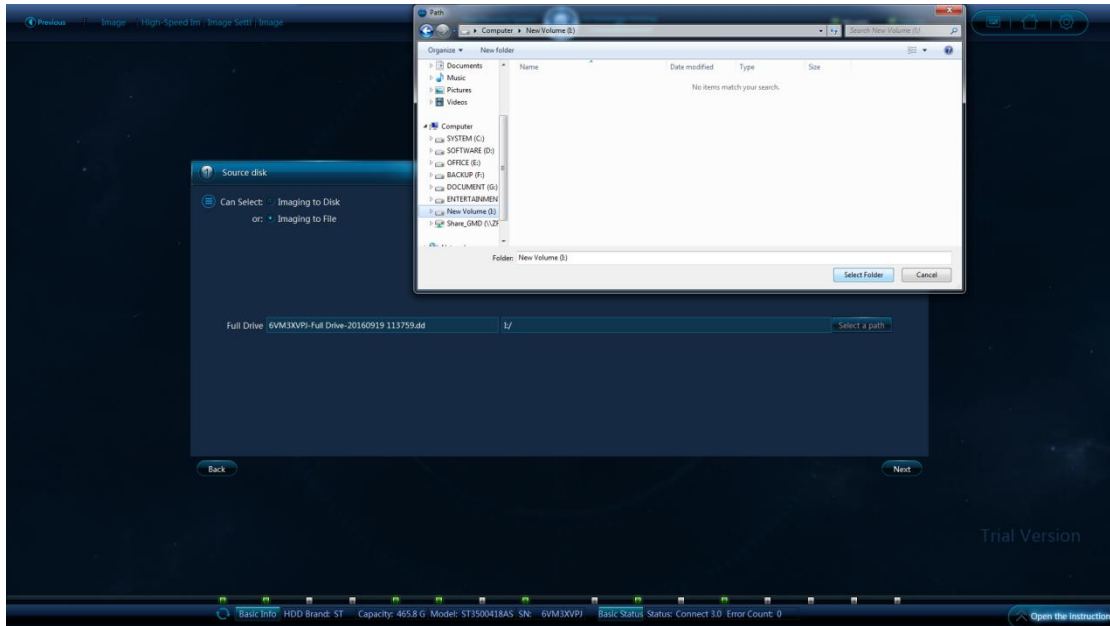
Note: DRS supports Copy DPT Information as well.



Imaging to Disk



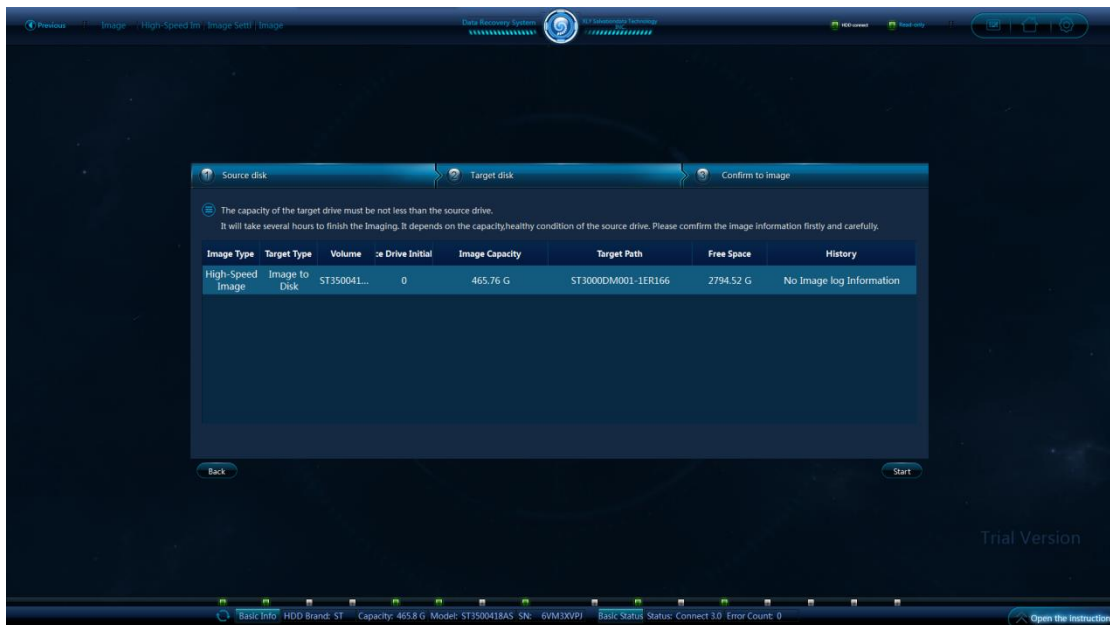
Imaging to Disk



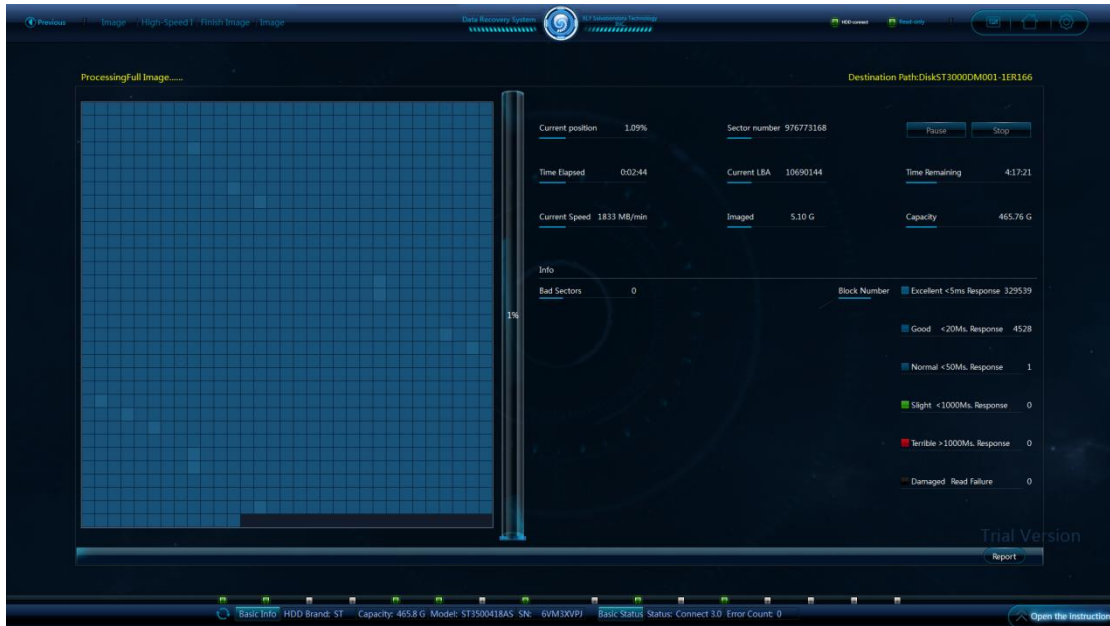
Imaging to File

Note: Before image starts, we need to check that the settings are correct. And all parameters can be reset through BACK button if there are any problem. we can start imaging if all settings are correct.

Step 3 Start Imaging



Start Imaging



Imaging in Process

And normal hard drive image is completed easily through such simple operations.